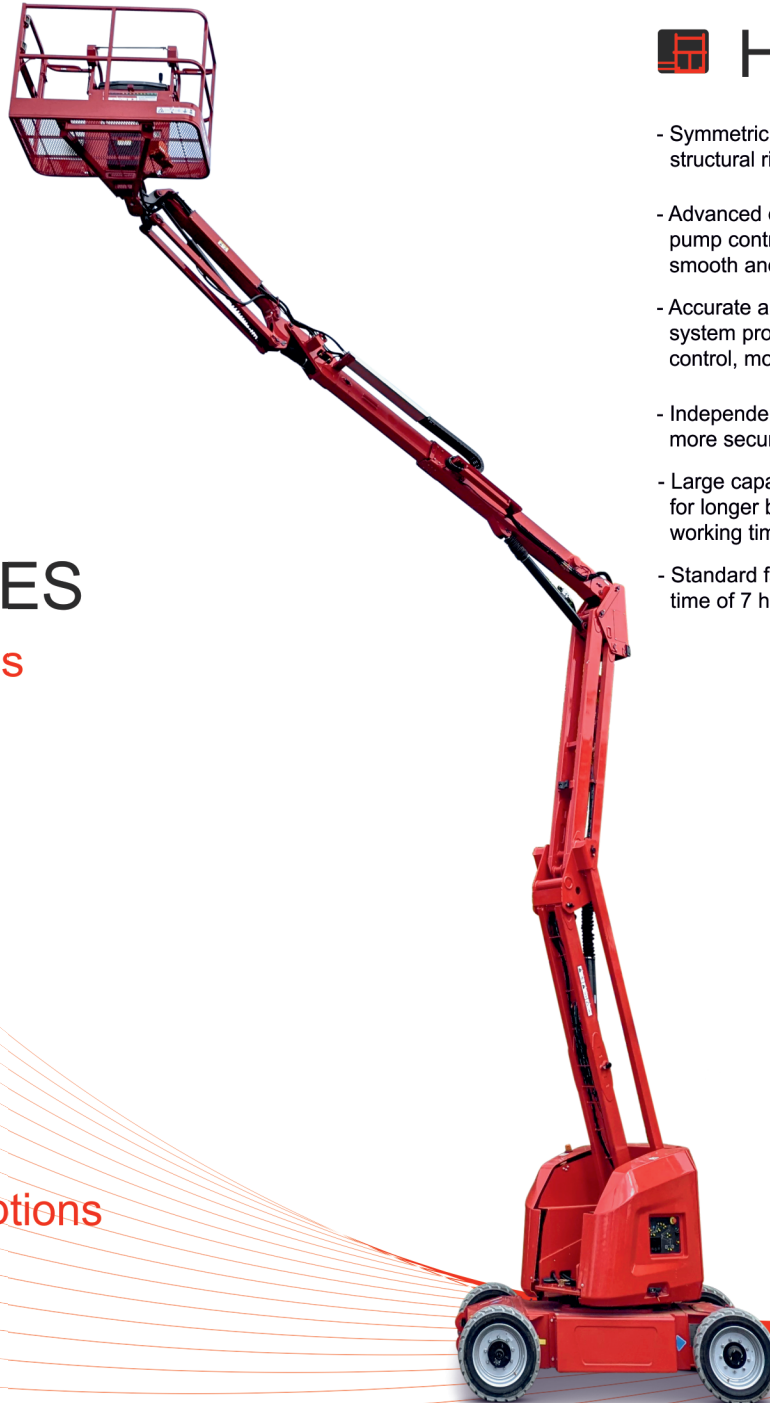




# TELESCOPIC BOOM LIFT

## PB DINO 16EZ

Complies with CE/ANSI/CSA standard



### FEATURES

#### Standard Features

- Proportional control
- All motion alarm
- Flashing beacon
- Self-closing entry gate
- Emergency descent system
- Emergency stop button
- Auto-leveling system
- On-board diagnostic system
- Over tilt protection system
- Oscillating axis
- Load sensing system
- 4.3' LED display
- Horn
- Anti-crushing device
- Fast charging

#### Accessories & Options

- Platform light
- AC power to platform
- Airline to platform
- Non-marking tires

### HIGHLIGHTS

- Symmetric layout boom design, great structural rigidity, and small boom deflection
- Advanced dual control system (valve control + pump control) offers an energy-saving, smooth and efficient control
- Accurate and efficient traveling AC drive system provides strong power and stable control, motor maintenance-free
- Independent auxiliary power system for more secure application
- Large capacity tube battery + fast charger for longer battery life of 5 years and working time, maintenance-free
- Standard fast charger for short charging time of 7 hours

## PB Liffttechnik GmbH

Phone: +49 (0) 90 77 - 95 00 - 0 Add: Gewerbegebiet Gassenäcker 1, 89429 Oberbechingen, Germany  
E-mail: [vertrieb@pblift.de](mailto:vertrieb@pblift.de) Web: [www.pblift.de](http://www.pblift.de)





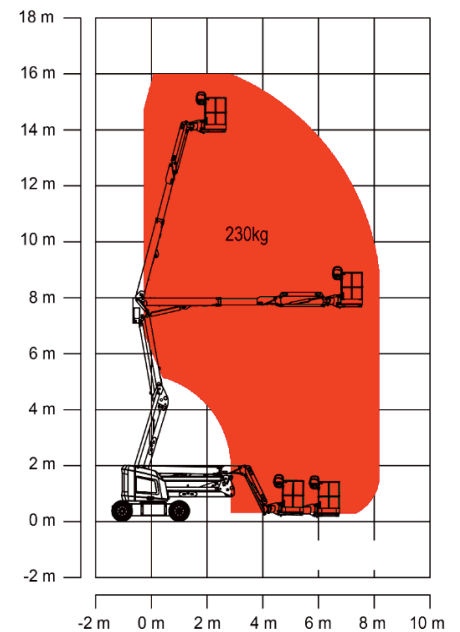
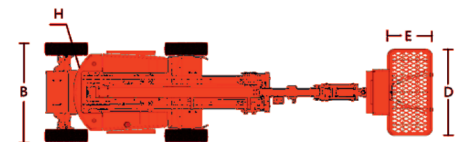
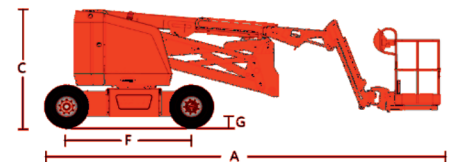
# TELESCOPIC BOOM LIFT

## PB DINO 16EZ

Complies with CE/ANSI/CSA standard

PB ECo type	PB DINO 16EZ
<b>Dimensions</b>	
Working height	16,00m
Platform height	14,00m
Horizontal Outreach	8,14m
Up and Over Height	7,74m
A – Total length (stowed)	6,60m
B – Total width	1,75m
C – Total height (stowed)	1,98m
D - Platform length	1,52m
E - Platform width	0,76m
F - Wheelbase	2,05m
G - Ground clearance	0,10m
<b>Performance</b>	
Platform capacity	230kg
Drive Speed	6,1km/h
Gradeability	30% (17°)
Turning Radius (Inside)	0,79m
Turning Radius (Outside)	3,15m
Turntable Swing	360° continuous
Max. Working Slope	3/4°
Platform Rotation	±90°
H Tail Swing	0,2m
Max. Wind Speed	12,5m/s
<b>Power</b>	
Battery capacity	2x24V / 320 Ah (AGM, maintenance-free)
Charger	48V/35A
Drive Motor	AC 32V/3,3kW
Lift Motor	AC 32V/7kW
Auxiliary Power	12V DC Electrical pump
Hydraulic Tank Capacity	30L
<b>Tires</b>	
Type	250-15 Solid tire
<b>Weight</b>	
Total weight	6700kg

Subject to technical changes / improvements.



Range of motion PB DINO 16EZ

